

Project Plan

Indoor Garden Cabinet Holder



Estimated Time: 2 **Hours**

Skill/Experience **Beginner**

Overall Dimensions:

Height 55 $\frac{3}{4}$ " x Width 25 $\frac{1}{2}$ " x Depth 12 $\frac{3}{4}$ "

Materials

- 1 Sheet of Plywood 4 x 8 - **1 Piece**
- 1 $\frac{1}{4}$ " Pocket Hole screws - **minimum 35 Screws**
- General purpose wood glue

Tools Needed

- Safety Glasses
- Pencil and tape measure
- Speed Square
- Table saw /Circular saw
- Drill driver
- Pocket hole jig.

Cut List

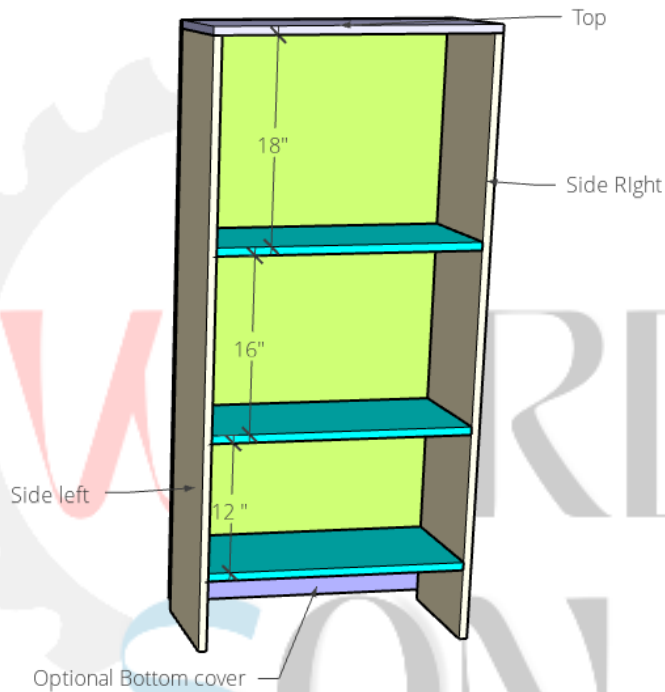
Material	Part	Dimensions	Qty
Plywood	Sides	55" x 12"	2
Plywood	Top	25 $\frac{1}{2}$ " X 12"	1
Plywood	Shelves	24" X 12"	3
Plywood	Back Cover	49 $\frac{3}{4}$ " x 25 $\frac{1}{2}$ "	1
Plywood	Optional Bottom Back	25 $\frac{1}{2}$ " x 6"	1

For Questions Contact - support@woodwordson.com

Instructions

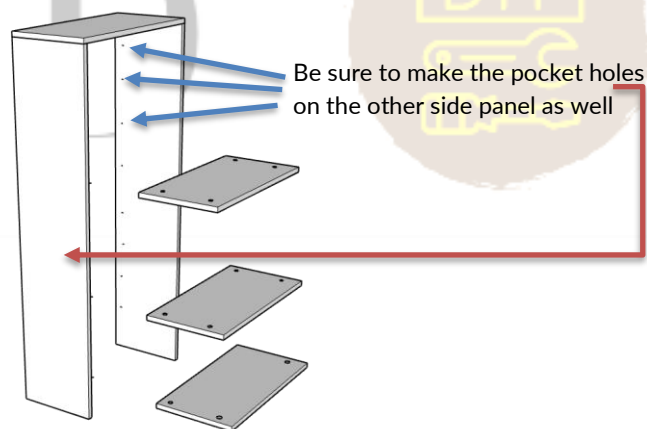
Step 1 – Making the Cuts

Cut the boards according to the cut list above



Step 2 – Pre-Assembly

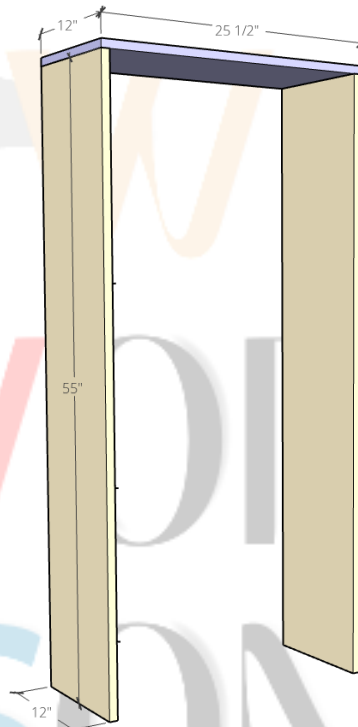
Make the pocket holes used to attach the panels. Note the pocket holes should be on the insides as indicated in the illustration below.



For Questions Contact - support@woodwordson.com

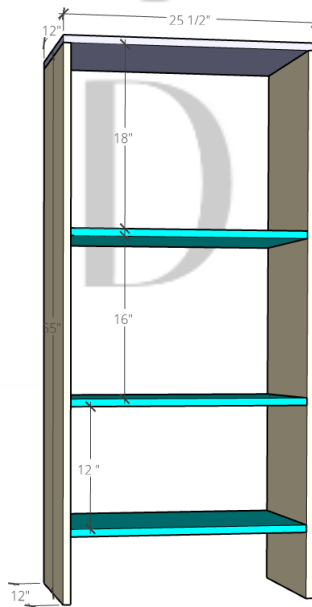
Step 3 - Assembly

Start by attaching the two sides to the top panel using some wood glue and pocket hole screws. Two screws on each side should be enough.



Step 4 - Assembly

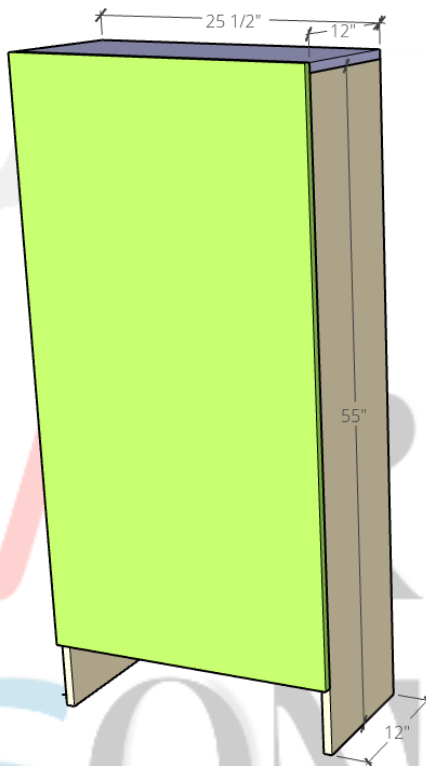
Attach the shelves pocket hole screws. Two screws on each side should be enough.



For Questions Contact - support@woodwordson.com

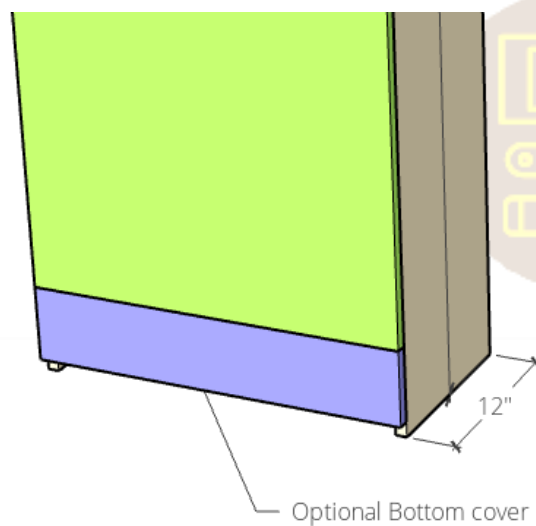
Step 5 - Assembly

Attach the back panel pocket hole screws. The pocket holes were already drilled on the side panels.

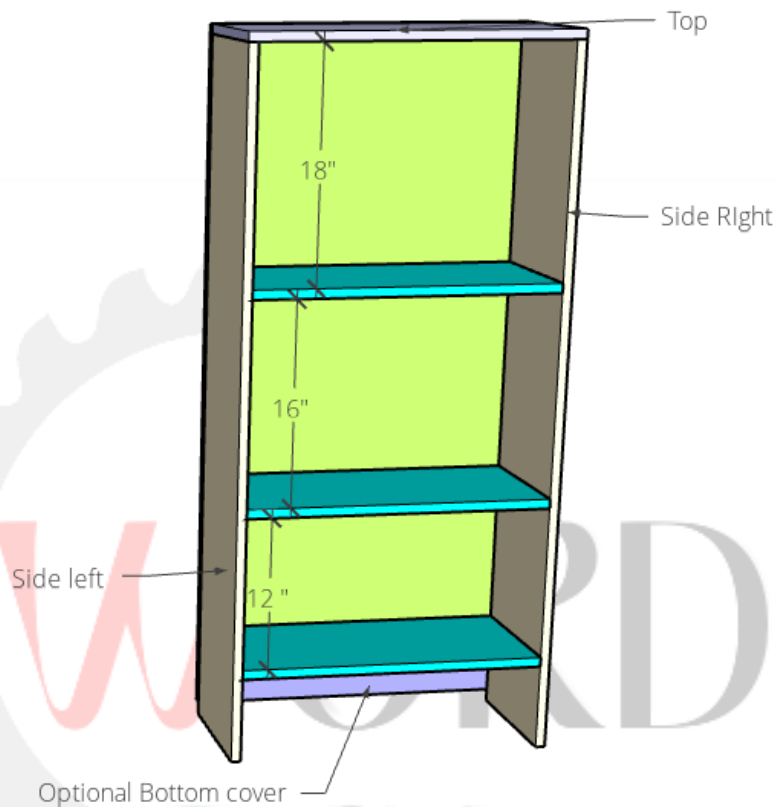


Step 6 - Assembly

Attach the optional bottom back piece for additional feet support. Two wood/construction screws at the back of each side should be enough.



For Questions Contact - support@woodwordson.com



Tips

- Make sure the blade on your saw is not dull. This will ensure clean cuts on the lumber.
- Finishing with stain or paint is optional, but you can sand off any visible splinters, sharp edges, or rough spots since that will make for smoother and safer handling.
 - Using pre-stain will make for a better-looking, even coat stain
- If you are comfortable adding edge banding, that will be a good way to cover up the $\frac{3}{4}$ plywood edges.
- For more tips. Check out the full video for free here: <https://youtu.be/19gAIFNAXFo>



For Questions Contact - support@woodwordson.com